



MAINSTREET VILLAGE

Assisted Living



MAINSTREET VILLAGE
OF RICHFIELD

Welcome to Mainstreet Village

At Mainstreet Village, your ideal residence is complemented by an assortment of conveniences and amenities to enrich your life.

Enjoy maintenance-free living and comfortable, convenient floor plans. Regardless of which plan you choose, it's sure to reflect your sense of style as you add your own personal touch.

Included Amenities

- Utilities (heat, electric, water, sewer and trash)
- Complimentary coffee daily
- Basic cable television service
- Open public Wi-Fi in select common areas
- Pastoral care
- Life Enrichment Coordinator to assist residents in planned activities and trips
- Scheduled transportation to shopping, outings and medical appointments
- Located on the bus line
- Outdoor patio and sitting areas
- Library with computer and internet access
- Month-to-month rental agreement
- On-site professional management
- Priority access to other Presbyterian Homes & Services living and care options based on availability
- Camera-monitored areas
- 24-hour controlled access entry
- Smoke-free community

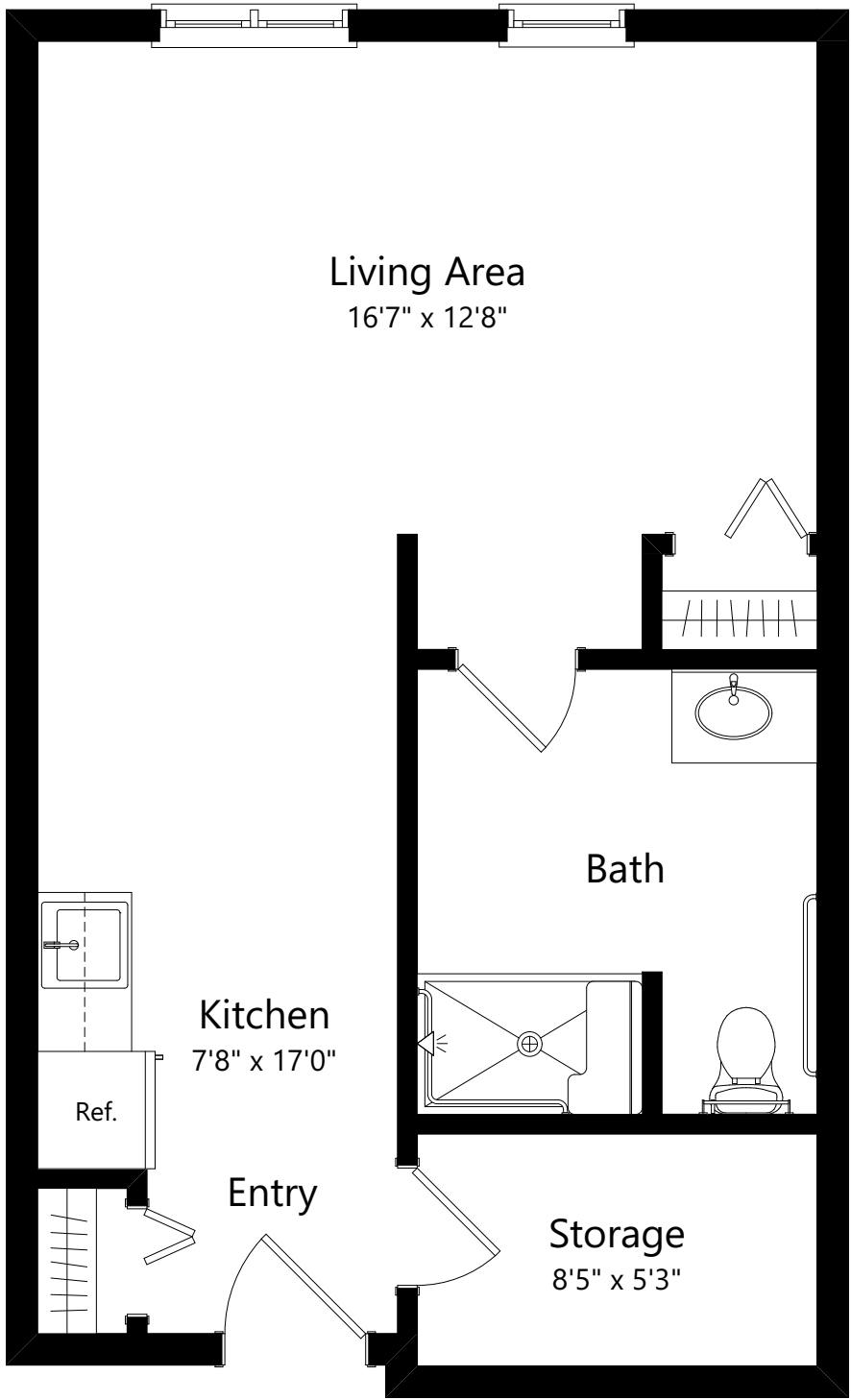
Other Conveniences

Additional fees may apply

- Heated underground and off-street parking available
- Breakfast, lunch and dinner with several menu options, served in a sunny and spacious dining room
- Telephone service
- Guest dining
- Guest suite
- Storage units
- Community room and fitness center
- Car wash area
- Hair salon

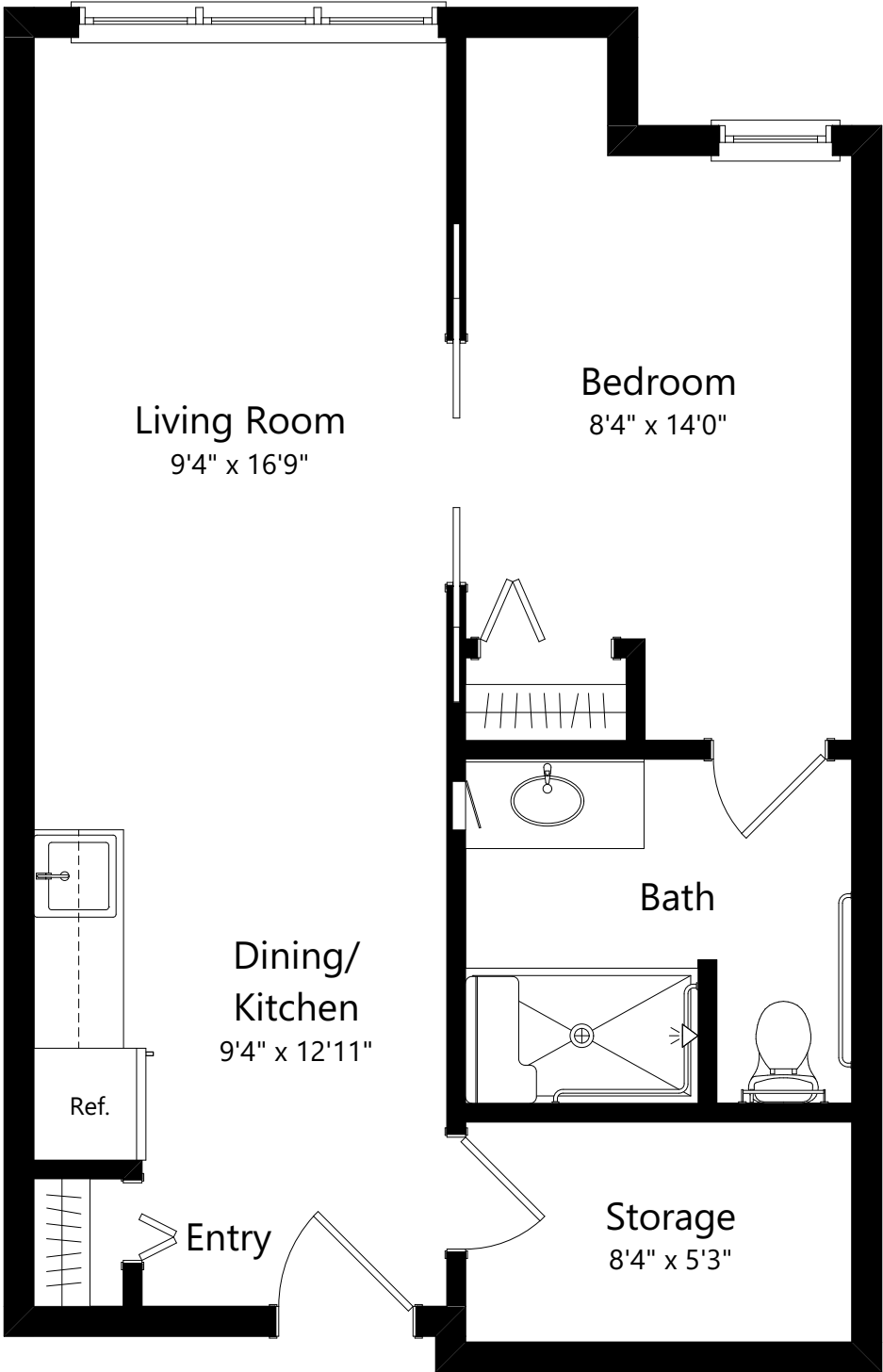


Sample Floor Plans



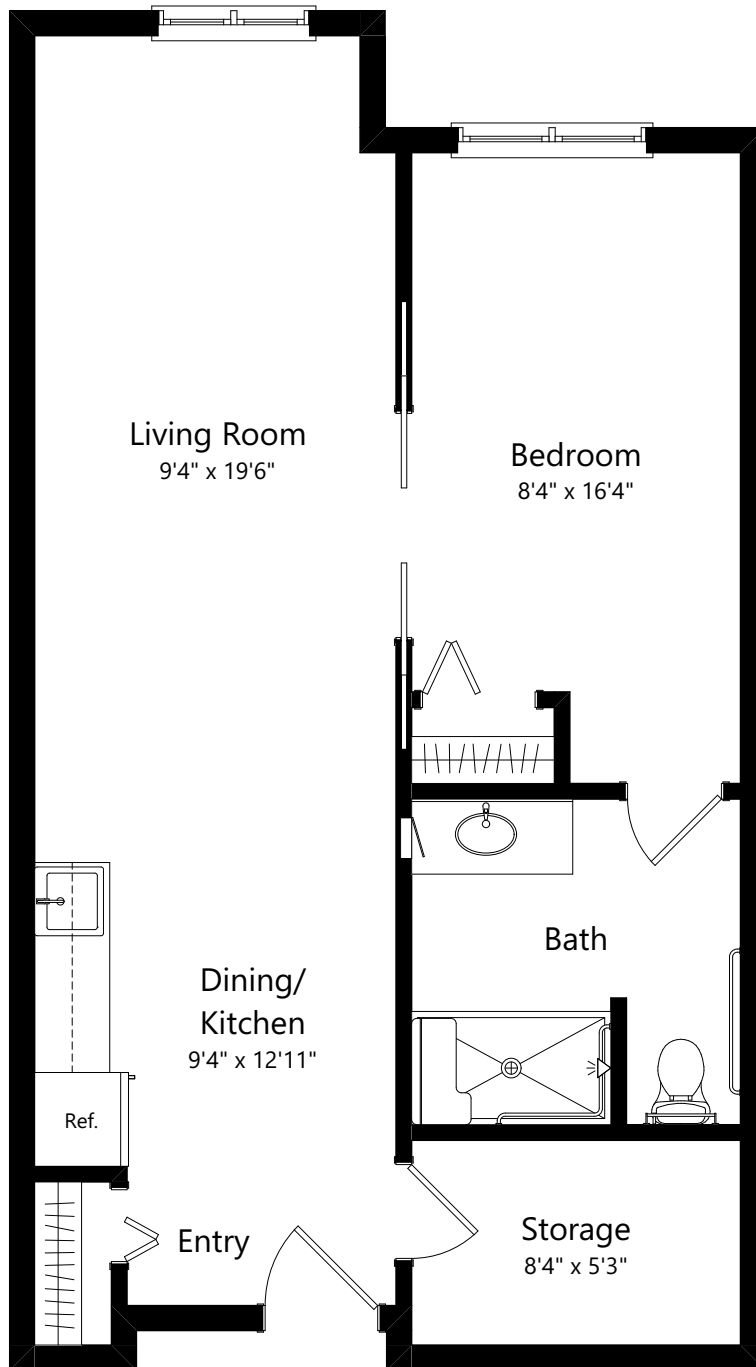
Penn
Regular Studio | 500 Sq. Ft.

Sample Floor Plans



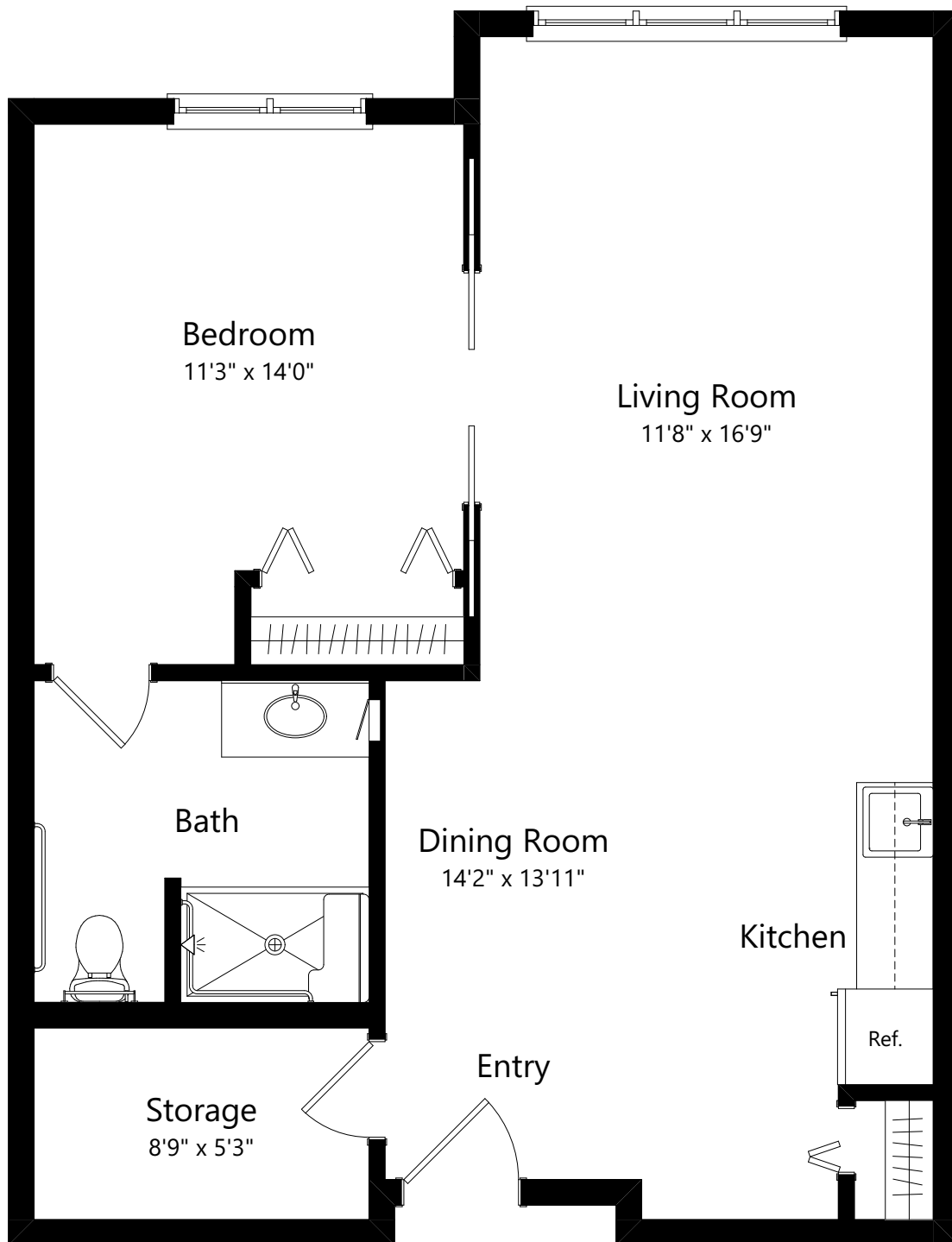
Fairwood

One Bedroom/One Bath | 568 Sq. Ft.



Grand

One Bedroom/One Bath | 604 Sq. Ft.



Heredia

One Bedroom/One Bath | 720 Sq. Ft.

Floor plans, features and amenities are subject to change without notice. Stated dimensions and square footage are approximate. Additional floor plans may be available. Please ask about availability.

At Mainstreet Village, we know each individual is just that—an individual. And our services reflect that philosophy. Select from a broad range of options depending on your personal preferences. It's all based on the principle of choice.

And the choice is yours.

Monthly Personal Care Fee Ranges*

Points from Assessment	Monthly Fee
0–9	\$460 (required)
10–101	\$920–\$2,300
102–239	\$2,760–\$4,560
240–354	\$4,770–\$5,610
355–492	\$5,820–\$6,870

*The care fee ranges above are for estimating purposes only.

Included in Your Personal Care Fees:

- Initial and ongoing nursing assessments
- Scheduled nursing hours and on-call nursing available for staff consultation
- Nurse liaison with health care professionals
- Nurse scheduling of lab draws
- Nurse maintaining clinical record information
- Daily reassurance check

Monthly Rental Fee

Apartment	Sq. Ft.	Rate
Small Studio	263–290	\$2,945
Regular Studio	458–558	\$2,945–\$3,195
One Bedroom	537–724	\$3,065–\$4,145
Two Bedroom (private)	1,041	\$5,965

Assisted Living Service Fees

In addition to the monthly rental fee, a monthly personal care fee for assisted living services is required based on the amount of care provided. The following steps help to assess your care needs and guide you through the residency process:

Step 1: Reserve an apartment at Mainstreet Village. We will help you through the reservation process and provide you with essential information in preparation for the following steps.

Step 2: Schedule an assisted living care assessment appointment. A nurse will meet with you to complete an initial assessment and help create a personalized care plan. The assessment will include a review of your individualized needs and a recommendation of services that could be provided to meet those needs. Each service is assigned a point value and the assessment will give you an estimated total number of points.* To view the care assessment, scan the QR code or visit MainstreetSeniorLiving.org and click on “Resident Documents.”



Step 3: Schedule a residency agreement appointment. We will review the residency agreement, payment information and other resources with you. Once the residency agreement process is complete, your move-in date will be confirmed.



612-869-6584

7601 Lyndale Avenue South
Richfield, MN 55423

[MainstreetVillageSeniorLiving.org](https://www.MainstreetVillageSeniorLiving.org)

Living Options

- Senior Apartments
- Assisted Living
- Memory Care

Due to COVID-19 or other future circumstance, some features may be temporarily unavailable or offered in a different way. We anticipate features will become available in original form once it is prudent to do so. Presbyterian Homes & Services (PHS) communities comply with applicable federal civil rights laws and do not discriminate on the basis of race, color, national origin, age, disability or sex.

[AvinitySeniorLiving.org](https://www.AvinitySeniorLiving.org)

Español (Spanish): Llame al 1-844-558-6125
Hmoob (Hmong): Hu rau 1-844-558-6125
Tagalog (Filipino): Tumawag sa 1-844-558-6125



Professional management by Avinity. Avinity is a shared ministry of The Avinity Foundation and Presbyterian Homes & Services. © 2022 Avinity. All faiths welcome. Equal housing opportunity.



9/23