



MAINSTREET VILLAGE

Senior Apartments



MAINSTREET VILLAGE
OF RICHFIELD

Welcome to Mainstreet Village

At Mainstreet Village, your ideal residence is complemented by an assortment of conveniences and amenities to enrich your life.

Enjoy maintenance-free living and comfortable, convenient floor plans. Regardless of which plan you choose, it's sure to reflect your sense of style as you add your own personal touch.

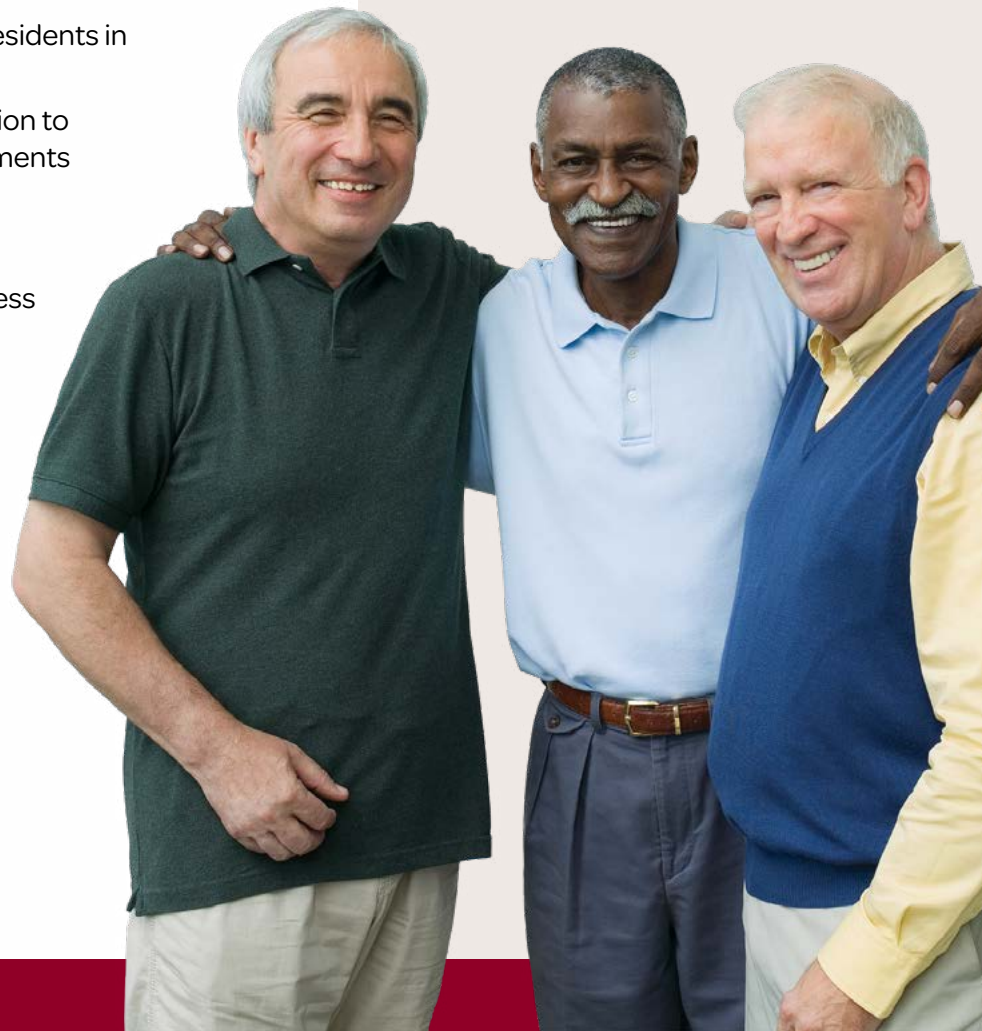
Included Amenities

- Utilities (heat, water, sewer and trash)
- Credit toward electricity
- Premier Level cable television service
- Complimentary coffee daily
- Two complimentary laundry rooms on each floor
- Open public Wi-Fi
- Pastoral care
- Life Enrichment Coordinator to assist residents in planned activities and trips
- Designated complimentary transportation to shopping, outings and medical appointments
- Located on the bus line
- Outdoor patio and sitting areas
- Library with computer and internet access
- Month-to-month rental agreement
- On-site professional management
- Priority access to other Presbyterian Homes & Services living and care options based on availability
- Camera-monitored areas
- 24-hour controlled access entry
- Smoke-free community

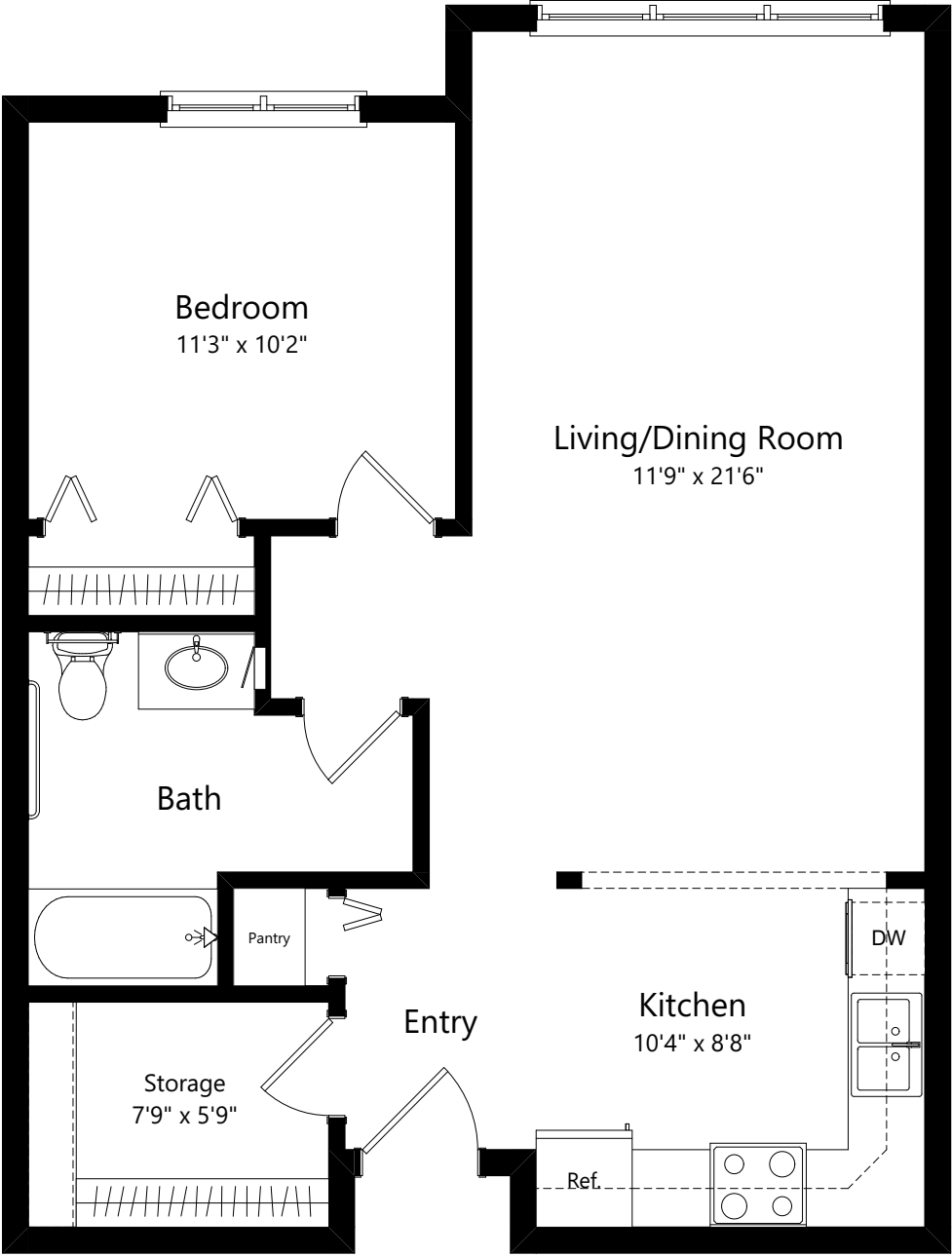
Other Conveniences

Additional fees may apply

- Heated underground and off-street parking available
- Lunch and dinner with several menu options, served in a sunny and spacious dining room with fireplace
- Housekeeping
- Telephone service
- Electricity included
- Guest dining
- Guest suite
- Storage units
- Community room and fitness center
- Small pets are welcome in most apartments (guidelines apply)
- Car wash area
- Hair salon



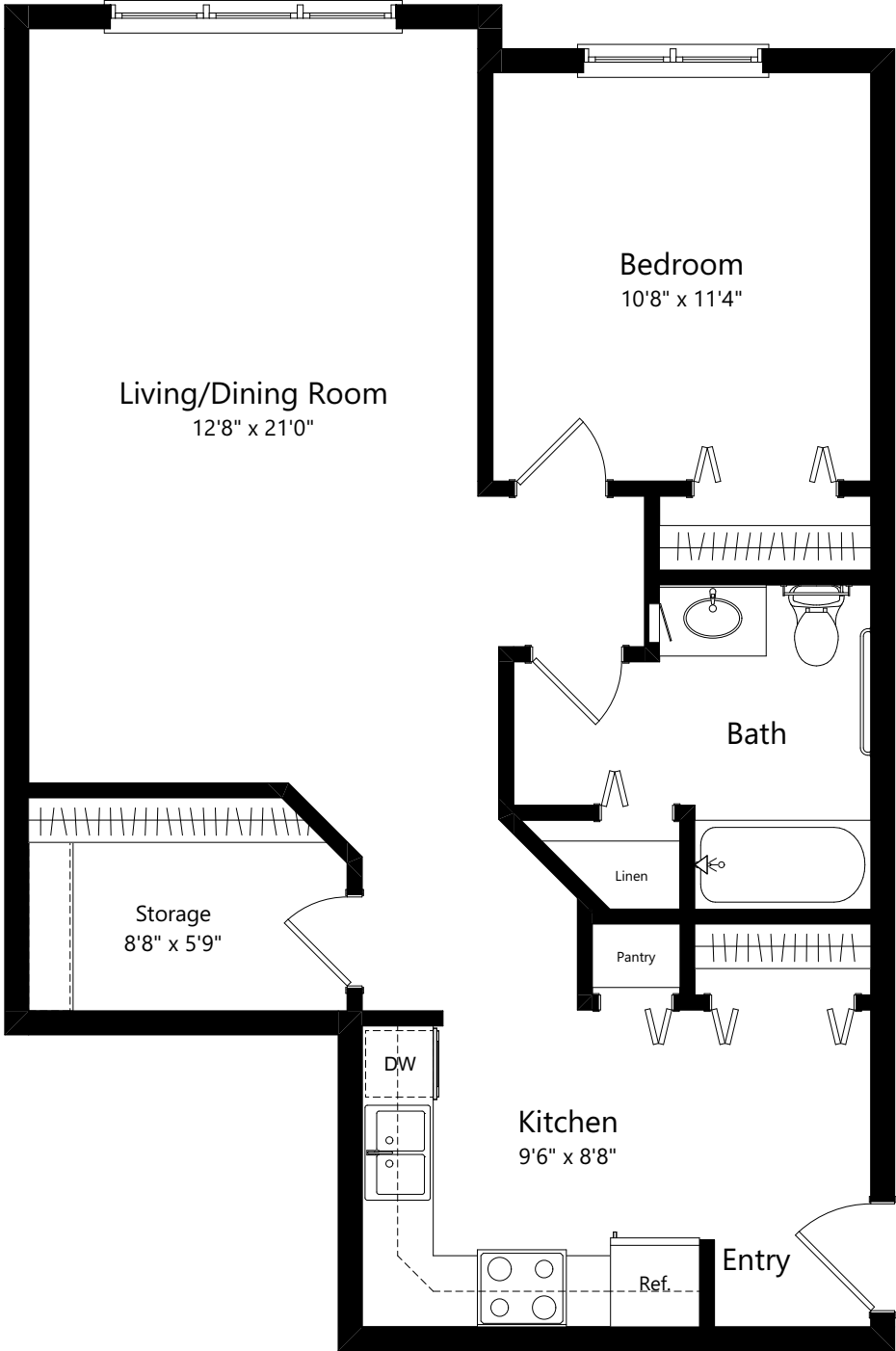
Sample Floor Plans



Aldrich

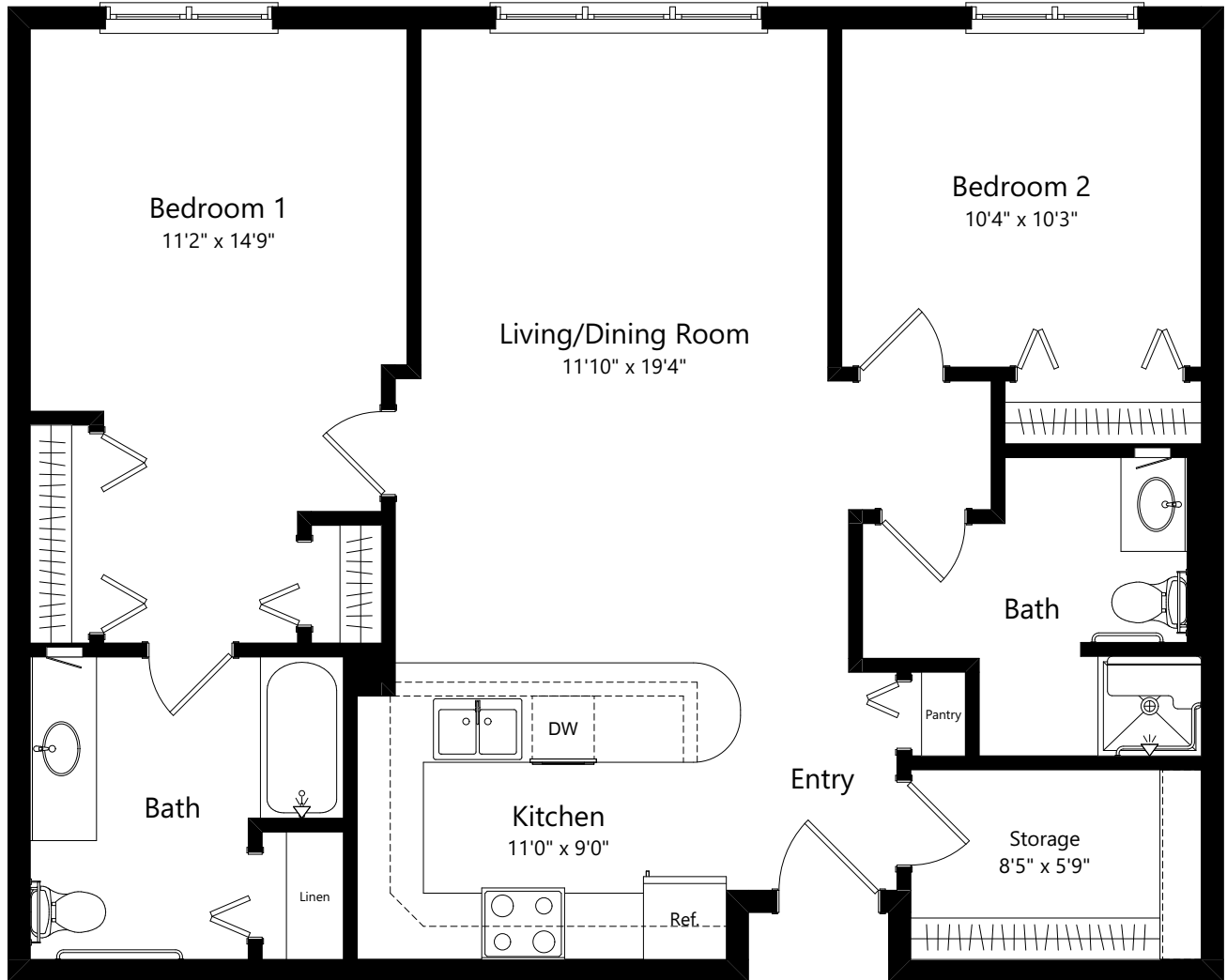
One Bedroom, One Bath | 724 Sq. Ft.

Sample Floor Plans



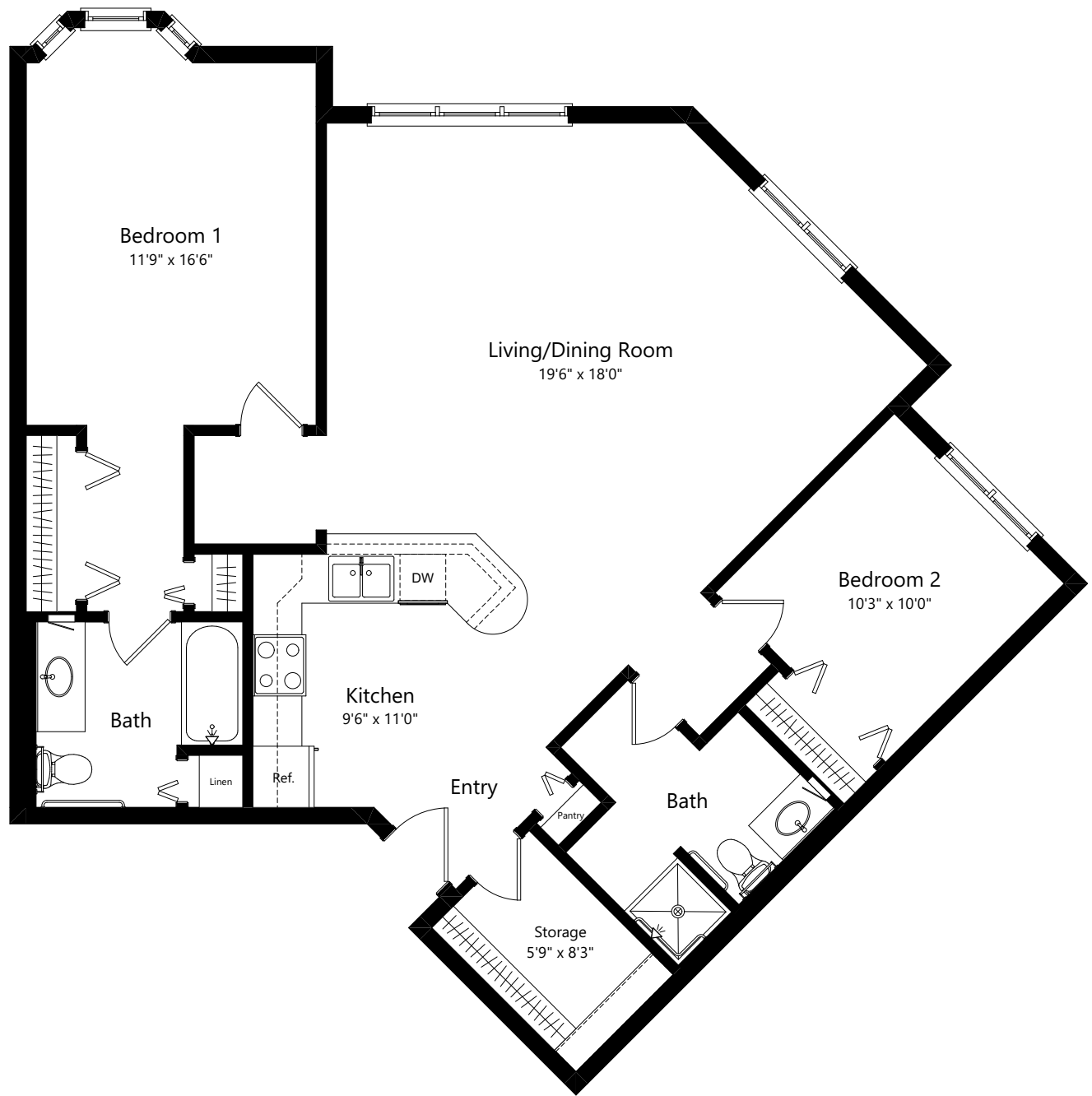
Elliot

One Bedroom, One Bath | 847 Sq. Ft.



Lyndale

Two Bedroom, Two Bath | 1,007 Sq. Ft.



Oliver +

Two Bedroom, Two Bath | 1,212 Sq. Ft.

Floor plans, features and amenities are subject to change without notice. Stated dimensions and square footage are approximate. Additional floor plans may be available. Please ask about availability.

Our senior apartments offer maintenance-free living and comfortable floor plans with value and convenience. Nicely appointed common areas are well-suited for group events and casual gatherings. Social, recreational and volunteer opportunities help create a sense of community.

Distinctive Details

- Ample storage in cabinets and closets
- Individually controlled heating and air conditioning
- Full kitchen with refrigerator, stove, dishwasher and microwave
- Walk-in closet
- Light, neutral décor
- Large windows allowing for natural light
- Pull cords in bedrooms and bathrooms monitored 24-hours
- Safety grab bars in bathrooms

Monthly Rental Fee

Style	Apartment Type	Sq. Ft.	Rate
Alrich/Bryant	One Bedroom/One Bathroom	724	\$1,750
Alrich+/Bryant+	One Bedroom/One Bathroom	734	\$1,775
Colfax	One Bedroom/One Bathroom	732	\$1,765
Dupont	One Bedroom/One Bathroom	766	\$1,855
Elliot	One Bedroom/One Bathroom	847	\$2,000
Elliot+	One Bedroom/One Bathroom	857	\$2,020
Fremont	Two Bedroom/One Bathroom	868	\$2,030
Fremont+	Two Bedroom/One Bathroom	878	\$2,055
Garfield	Two Bedroom/One Bathroom	916	\$2,140
Humboldt	Two Bedroom/One Bathroom	945	\$2,210
Irving	Two Bedroom/One Bathroom	917	\$2,145
James	Two Bedroom/One Bathroom	966	\$2,260
James+	Two Bedroom/One Bathroom	976	\$2,285
Knox	Two Bedroom/One Bathroom	980	\$2,290
Knox+	Two Bedroom/One Bathroom	990	\$2,315
Lyndale	Two Bedroom/Two Bathroom	1,007	\$2,355
Morgan	Two Bedroom/Two Bathroom	985	\$2,305
Morgan+	Two Bedroom/Two Bathroom	995	\$2,325
Nicollet	Two Bedroom/Two Bathroom	1,050	\$2,460
Oliver	Two Bedroom/Two Bathroom	1,202	\$2,815
Oliver+	Two Bedroom/Two Bathroom	1,212	\$2,835



612-869-6584

7601 Lyndale Avenue South
Richfield, MN 55423

MainstreetVillageSeniorLiving.org



Due to COVID-19 or other future circumstance, some features may be temporarily unavailable or offered in a different way. We anticipate features will become available in original form once it is prudent to do so. Presbyterian Homes & Services (PHS) communities comply with applicable federal civil rights laws and do not discriminate on the basis of race, color, national origin, age, disability or sex.

AvinitySeniorLiving.org

Español (Spanish): Llame al 1-844-558-6125
Hmoob (Hmong): Hu rau 1-844-558-6125
Tagalog (Filipino): Tumawag sa 1-844-558-6125



Professional management by Avinity. Avinity is a shared ministry of The Avinity Foundation and Presbyterian Homes & Services. © 2023 Avinity. All faiths welcome. Equal housing opportunity.



5/23